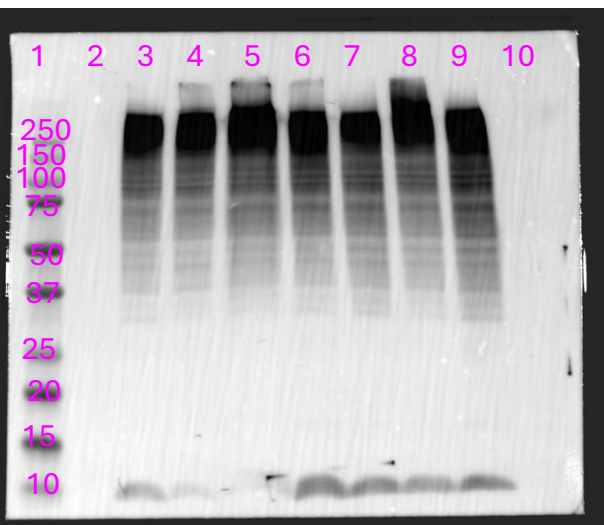
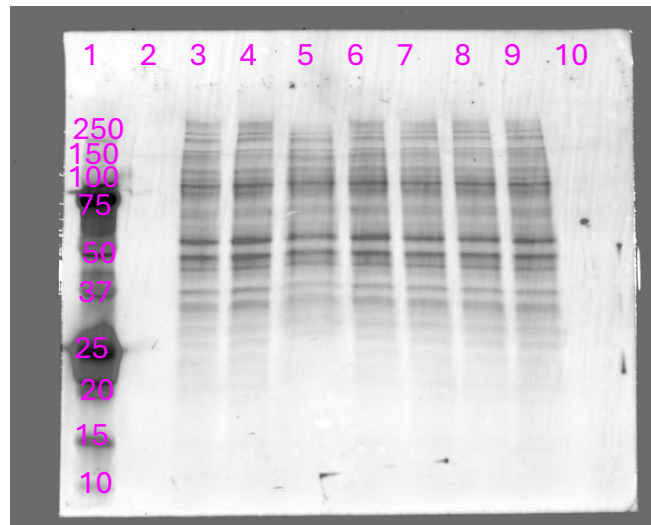


## SOLUBLE FRACTION

aUbiquitin (P4D1)



Stain Free

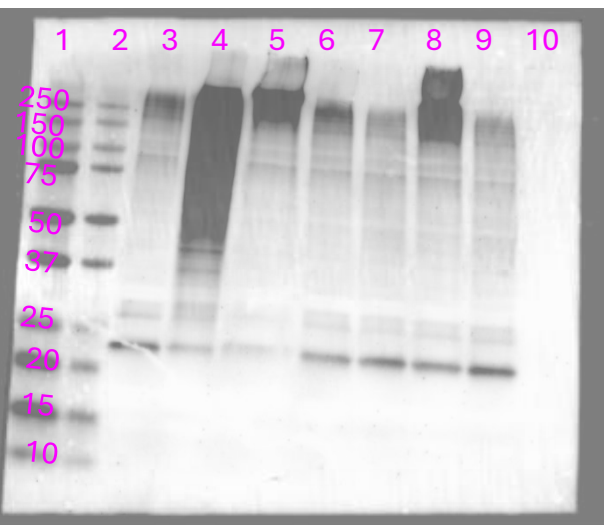


Lanes

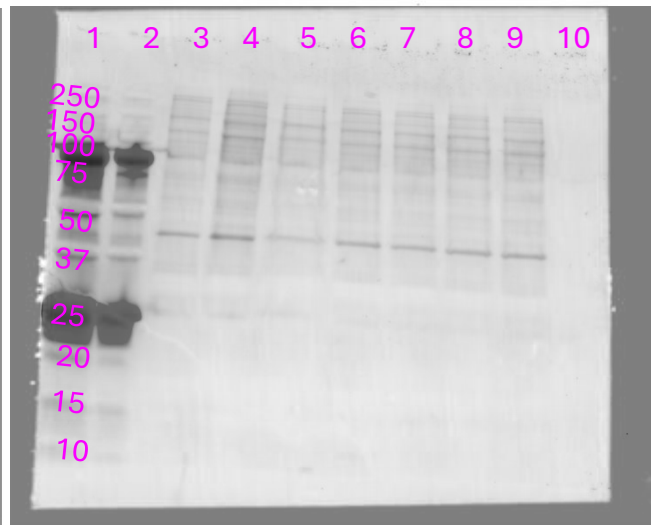
1. Ladder
2. Buffer
3. Uninfected
4. Heat shock
5. WT *L.p.*
6. *dotA L.p.*
7. *dsidE/sdeABC*
8. *dsidE/sdeABC* + pSdeB
9. *dsidE/sdeABC* + pSdeB EE/AA
10. Buffer

## INSOLUBLE FRACTION

aUbiquitin (P4D1)



Stain Free



Lanes

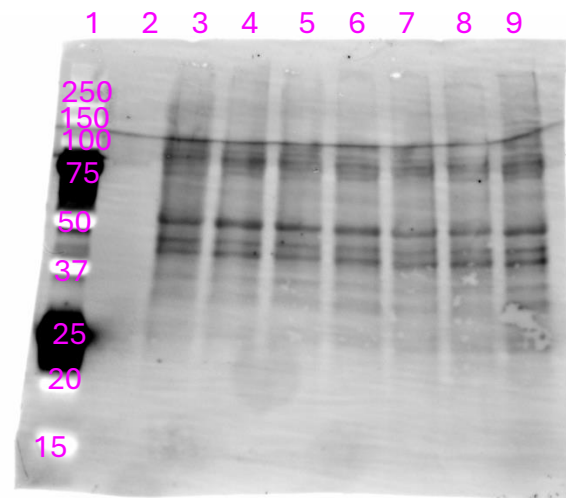
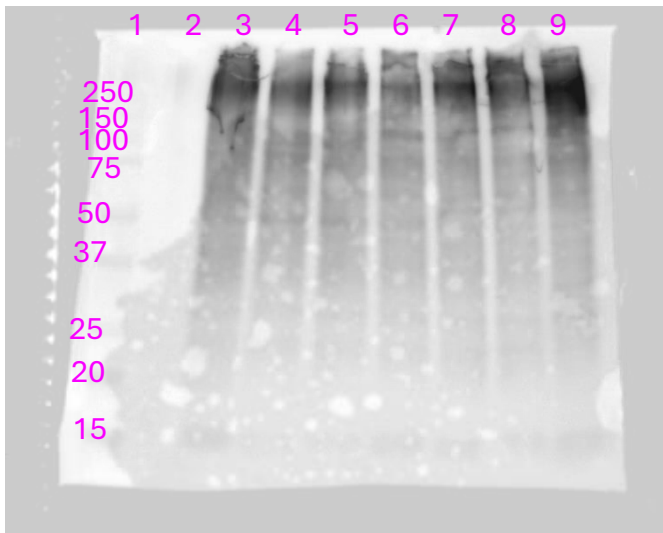
1. Ladder
2. Ladder
3. Uninfected
4. Heat shock
5. WT *L.p.*
6. *dotA L.p.*
7. *dsidE/sdeABC*
8. *dsidE/sdeABC* + pSdeB
9. *dsidE/sdeABC* + pSdeB EE/AA
10. Buffer

**Source data for Figure 5, D-E.** Immunoblot analysis of total ubiquitin in the (D) soluble or (E) insoluble fraction of cells infected with the indicated *L.p.* strain from the *dsidE/sdeABC* panel, heat shocked, or left untreated, with total protein (StainFree, BioRad) shown as the loading control. Cells were infected/heat shocked for 1 hr. Ubiquitin blots are merged chemiluminescence and colorimetric images of the Dual Stained Precision Plus ladder (BioRad), ladder label units are kDa. Stain free blots are merged StainFree images and colorimetric images of the ladder as for ubiquitin blots.

## SOLUBLE FRACTION

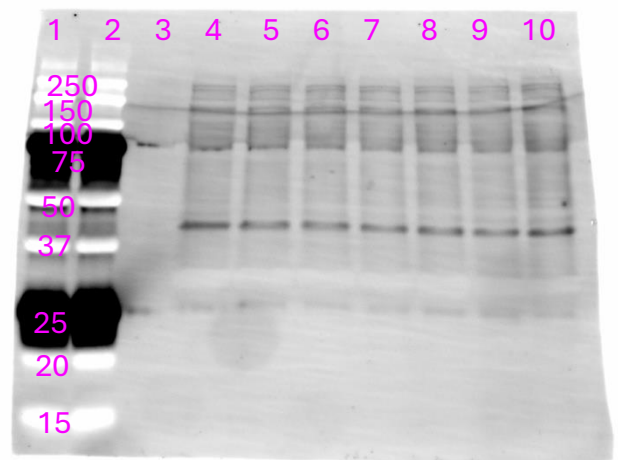
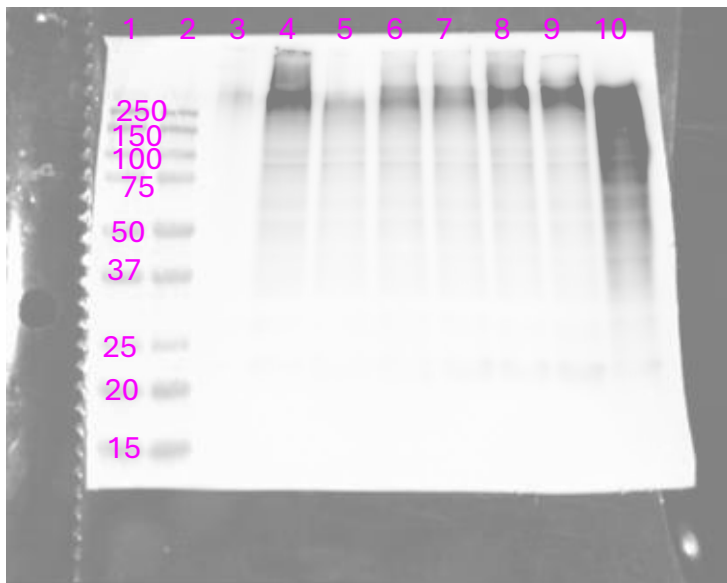
aUbiquitin (P4D1)

Stain Free



Lanes:                      4. *dotA* *L.p.*                      7. *dsidC/sdcA* +                      9. Heat shock  
 1. Ladder                      5. *dsidC/sdcA*                      *pSdcA*  
 2. Buffer                      6. *dsidC/sdcA* +                      8. *dsidC/sdcA* +  
 3. WT *L.p.*                      vector                      *pSidC*

## INSOLUBLE FRACTION



Lanes:                      4. WT *L.p.*                      vector                      *pSidC*  
 1. Ladder                      5. *dotA* *L.p.*                      8. *dsidC/sdcA* +                      10. Heat shock  
 2. Ladder                      6. *dsidC/sdcA*                      *pSdcA*  
 3. Buffer                      7. *dsidC/sdcA* +                      9. *dsidC/sdcA* +

**Source data for Figure 5, G-H.** Immunoblot analysis of total ubiquitin in the (G) soluble or (H) insoluble fraction of cells infected with the indicated *L.p.* strain from the *dsidC/sdcA* panel, heat shocked, or left untreated, with total protein (StainFree, BioRad) shown as the loading control. Cells were infected/heat shocked for 1 hr. Ubiquitin blots are merged chemiluminescence and colorimetric images of the Dual Stained Precision Plus ladder (BioRad), ladder label units are kDa. Stain free blot size ladder labeling is based on ladder background in StainFree image.